

# 22-88847A1

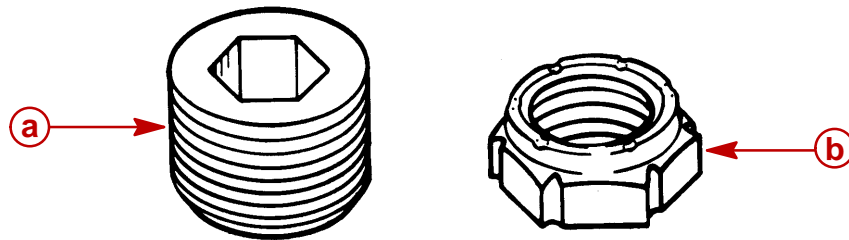
## GIMBAL HOUSING ACCESS PLUG KIT

This kit is for MerCruiser transom assemblies. It allows removal and installation of gimbal ring without having to remove engine and transom assembly. Templates are included to locate access holes. Refer to appropriate MerCruiser Sterndrive Service Manual for additional installation information.

**NOTE:** If steering lever cavity is not accessible, it will be necessary to drill access holes in gimbal housing.

### Parts List

PART NUMBER	DESCRIPTION	QTY.
22-88847	Pipe Plug	2
11-88462	Nut, 3/4 in. - 16	1



26409

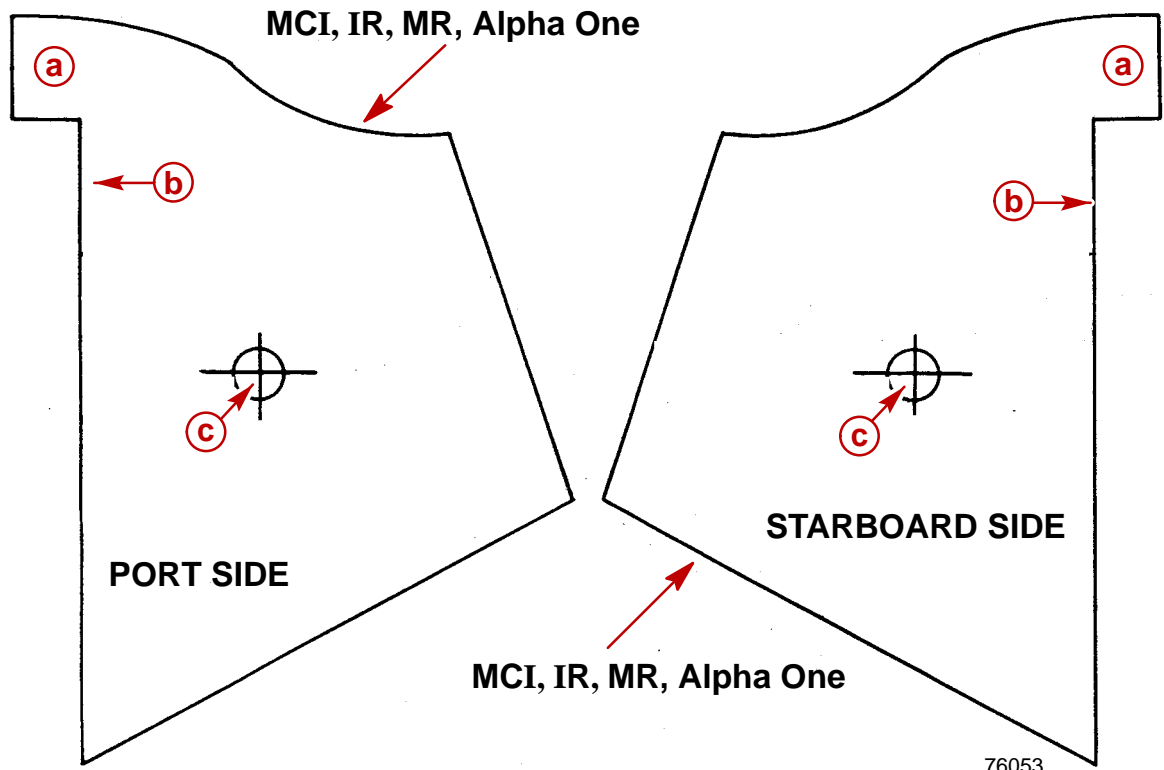
- a** - Pipe Plug (2)
- b** - Swivel Shaft Nut

### Special Tools

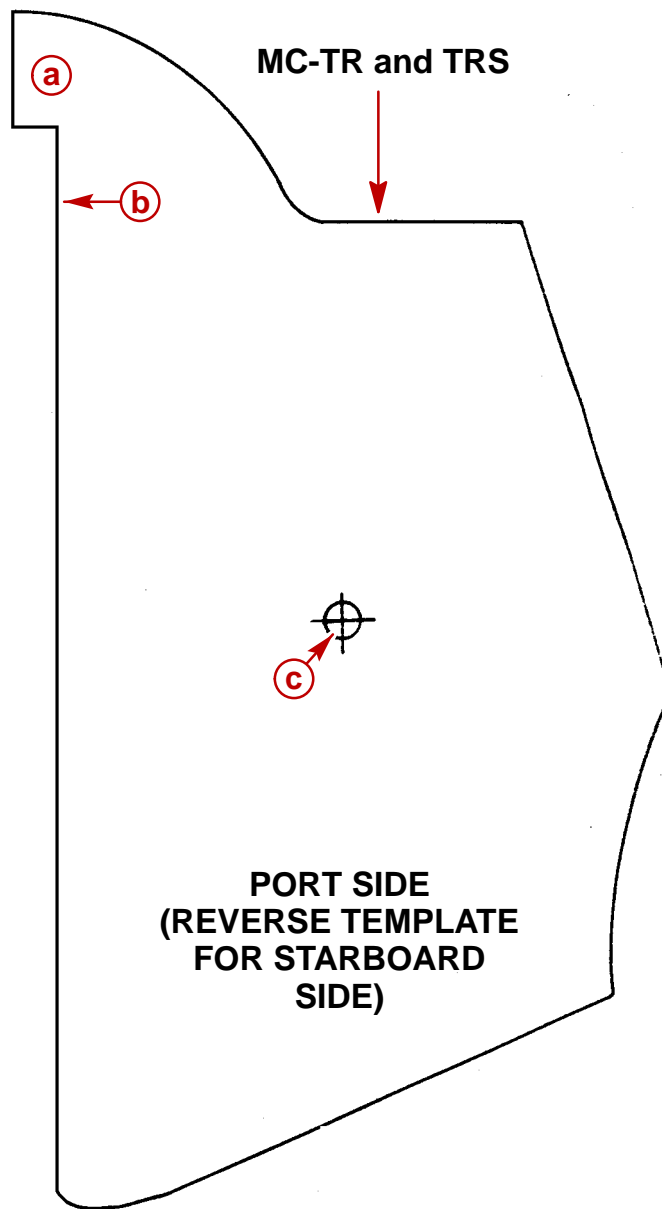
PART NUMBER	DESCRIPTION
Obtain Locally	Hole Saw - 1-1/8 in.
Obtain Locally	Tap - 1 in. NPT #180

# Templates

**IMPORTANT:** Carefully cut out required template. Use straight edge to make accurate folds. align centerline with center line of dimple. with template accurately aligned, tape template to gimbal housing securely so that it cannot move or shift.



- a** - Top of Template
- b** - Place This Surface Against Gimbal Housing Lip
- c** - Center Punch: Use 1-1/8 in. (28.5 mm) Hole Saw To Cut Access Hole



76053

- a** - Top of Template
- b** - Place This Surface Against Gimbal Housing Lip
- c** - Center Punch: Use 1-1/8 in. (28.5 mm) Hole Saw To Cut Access Hole

